

Planning and Development Acts 2000 (as amended)

Part 8 Planning and Development Regulations 2001-2015

Notice of proposed development. Notice is hereby given that in accordance with the requirements of the above regulations that Longford County Council proposes to undertake the following works:

**Proposed alternations to external library elevations, rear car park arrangement, and site entrance to that as granted under Part 8 Planning Ref. No. 33, and introduction of external ramped access along eastern site boundary, at Main Street, Edgeworthstown, Co. Longford.**

The proposed development involves:

Minor alternations to the front (north) and rear (south) elevational facades, and side (east) elevation to facilitate improved accessibility and fire safety. The proposal also involves the repositioned site entrance to the rear, rearranged car parking layout, subsequent omission of community/social building, and the introduction of external access ramp, and relocated and redesigned external stairwell. The above changes relate to that as was previously granted under Planning Reference Part 8 No. 33.

Plans and particulars of the proposed development will be available for inspection or purchase at a fee, not exceeding the reasonable cost of making the copy, at the office of Longford County Council, Áras an Chontae, Great Water Street, Longford during official public opening hours, excluding weekends and bank holidays from

**Friday 15<sup>th</sup> November 2019 up to and including**

**Monday 16<sup>th</sup> December 2019.**

Submissions with respect to the proposed development, dealing with the proper planning and sustainable development of the area, may be made in writing to Longford County Council, headed

**'Part 8 No. 69 – External alternations to Edgeworthstown Library & Rear Car Park, Main St., Edgeworthstown, Co. Longford'**

and addressed to Planning Section, Longford County Council, Áras an Chontae, Great Water Street, Longford to arrive not later than **4.00pm on Thursday 9<sup>th</sup> January 2020.**

Signed

**J. BRANNIGAN, DIRECTOR OF SERVICES.**

Longford County Council

Áras an Chontae, Great Water Street, Longford. N39 NH56

• Tel: 043 33 43300 • Fax: 043 33 41233

• Email: [info@longfordcoco.ie](mailto:info@longfordcoco.ie) • Website: [www.longfordcoco.ie](http://www.longfordcoco.ie)

## Longford County Council

### Community Grant Support Scheme 2020

The Longford County Council Community Grant Support Scheme for 2020 is now open for applications. Application forms and details are available from the Community & Enterprise Department, Longford County Council, Áras an Chontae, Great Water Street, Longford, telephone (043) 3343313/3343472 email [commgrants@longfordcoco.ie](mailto:commgrants@longfordcoco.ie) or on Longford County Council's website: [www.longfordcoco.ie](http://www.longfordcoco.ie)

The closing date for receipt of completed application forms is 28<sup>th</sup> February 2020.

### COMHAIRLE CHONTAE LONGFOIRI

#### NOTICE OF LOCAL AUTHORITY BUDGET

Notice is hereby given that the Local Authority Budget of the Longford County Council for the financial year ending on the 31<sup>st</sup> December 2020 has been prepared and will be considered by the Council at the Budget Meeting to be held on the 25<sup>th</sup> day of November 2019.

A copy of the Local Authority Budget will be deposited in the offices of the County Council at Áras an Chontae, Great Water Street, Longford, and may be inspected there from 15<sup>th</sup> November 2019 free of charge by any member of the public at any time while the offices are open for the transaction of official business.

A copy of the Local Authority Budget will be supplied to every person making application therefor at the price of one euro.

Signed: **John McKeon**

**Head of Finance**

**8<sup>th</sup> November 2019**

**COVER PAGE**



**Proposed alternations to external elevations and rear car park arrangement and entrance to proposed library as granted under Part 8 Planning Ref. No. 33, and introduction of ramped access along eastern site boundary, at Main Street, Edgeworthstown, Co. Longford.**

## **SCHEDULE**

- Development Description
- Newspaper Notice
- Site Notice
- Site Layout Plan, Plans, Section & Elevations



## DEVELOPMENT DESCRIPTION

**Proposed alternations to external library elevations, rear car park arrangement, and site entrance to that as granted under Part 8 Planning Ref. No. 33, and introduction of external ramped access along eastern site boundary, at Main Street, Edgeworthstown, Co. Longford.**

The proposed development involves minor alternations to the front (north) and rear (south) elevational facades, and side (east) elevation to facilitate improved accessibility and fire safety.

The proposal also involves the repositioned site entrance to the rear, rearranged car parking layout, subsequent omission of community/social building, and the introduction of external access ramp, and relocated and redesigned external stairwell.

The above changes relate to that as was previously granted under Planning Reference Part 8 No. 33.



Planning and Development Acts 2000 (as amended)

Part 8 Planning and Development Regulations 2001-2015

Notice of proposed development. Notice is hereby given that in accordance with the requirements of the above regulations that Longford County Council proposes to undertake the following works:

**Proposed alternations to external library elevations, rear car park arrangement, and site entrance to that as granted under Part 8 Planning Ref. No. 33, and introduction of external ramped access along eastern site boundary, at Main Street, Edgeworthstown, Co. Longford.**

The proposed development involves:

Minor alternations to the front (north) and rear (south) elevational facades, and side (east) elevation to facilitate improved accessibility and fire safety. The proposal also involves the repositioned site entrance to the rear, rearranged car parking layout, subsequent omission of community/social building, and the introduction of external access ramp, and relocated and redesigned external stairwell. The above changes relate to that as was previously granted under Planning Reference Part 8 No. 33.

Plans and particulars of the proposed development will be available for inspection or purchase at a fee, not exceeding the reasonable cost of making the copy, at the office of Longford County Council, Áras an Chontae, Great Water Street, Longford during official public opening hours, excluding weekends and bank holidays from **Friday 15<sup>th</sup> November 2019 up to and including Monday 16<sup>th</sup> December 2019.**

Submissions with respect to the proposed development, dealing with the proper planning and sustainable development of the area, may be made in writing to Longford County Council, headed

**'Part 8 No. 69 – External alternations to Edgeworthstown Library & Rear Car Park, Main St., Edgeworthstown, Co. Longford'**

and addressed to Planning Section, Longford County Council, Áras an Chontae, Great Water Street, Longford to arrive not later than **4.00pm on Thursday 9<sup>th</sup> January 2020.**

Signed

**J. BRANNIGAN,  
DIRECTOR OF SERVICES.**

**15<sup>th</sup> November, 2019**



Longford County Council

## SITE NOTICE

Planning and Development Acts 2000 (as amended)

Part 8 Planning and Development Regulations 2001-2015

Notice of proposed development. Notice is hereby given that in accordance with the requirements of the above regulations that Longford County Council proposes to undertake the following works:

**Proposed alternations to external library elevations, rear car park arrangement, and site entrance to that as granted under Part 8 Planning Ref. No. 33, and introduction of external ramped access along eastern site boundary, at Main Street, Edgeworthstown, Co. Longford.**

The proposed development involves:

Minor alternations to the front (north) and rear (south) elevational facades, and side (east) elevation to facilitate improved accessibility and fire safety. The proposal also involves the repositioned site entrance to the rear, rearranged car parking layout, subsequent omission of community/social building, and the introduction of external access ramp, and relocated and redesigned external stairwell. The above changes relate to that as was previously granted under Planning Reference Part 8 No. 33.

Plans and particulars of the proposed development will be available for inspection or purchase at a fee, not exceeding the reasonable cost of making the copy, at the office of Longford County Council, Áras an Chontae, Great Water Street, Longford during official public opening hours, excluding weekends and bank holidays from **Friday 15<sup>th</sup> November 2019 up to and including Monday 16<sup>th</sup> December 2019.**

Submissions with respect to the proposed development, dealing with the proper planning and sustainable development of the area, may be made in writing to Longford County Council, headed

**'Part 8 No. 69 – External alternations to Edgeworthstown Library & Rear Car Park, Main St., Edgeworthstown, Co. Longford'**

and addressed to Planning Section, Longford County Council, Áras an Chontae, Great Water Street, Longford to arrive not later than **4.00pm on Thursday 9<sup>th</sup> January 2020.**

Signed

**J. BRANNIGAN,  
DIRECTOR OF SERVICES.**

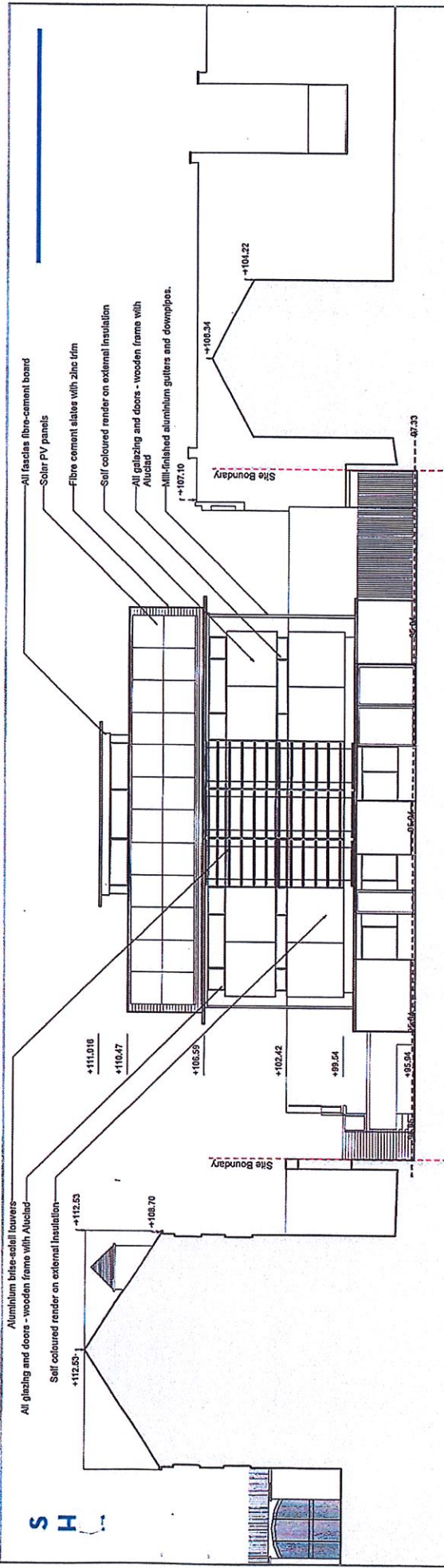
**15<sup>th</sup> November 2019**



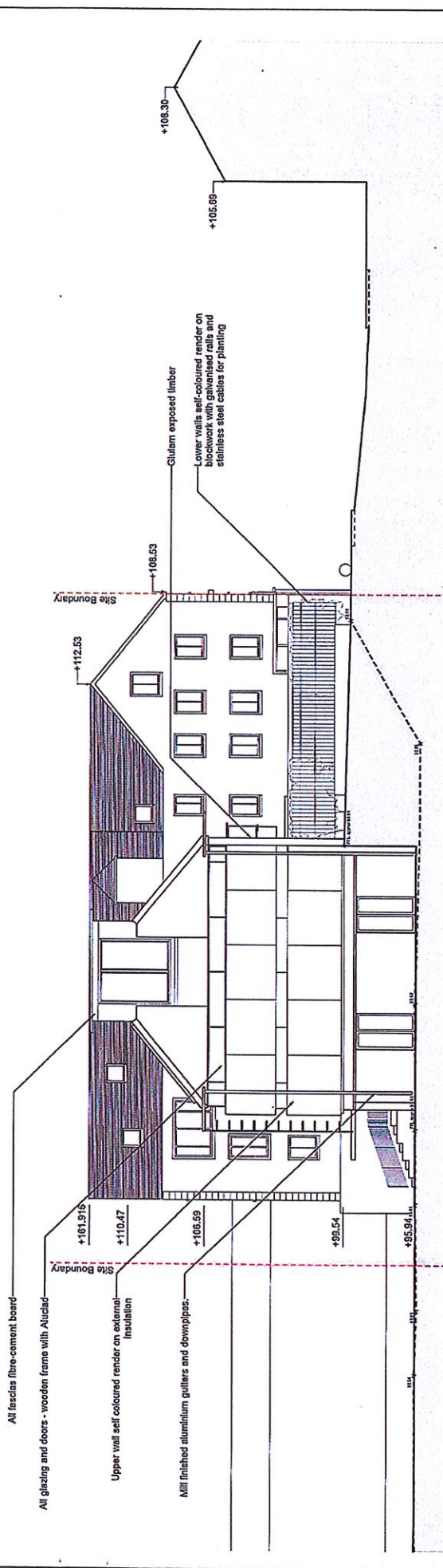








Elevation C 1/200



Elevation D 1/200

USE FIGURED DIMENSIONS ONLY.  
DO NOT SCALE DRAWINGS.  
READ IN CONJUNCTION WITH SPECIFICATION  
FOR MATERIALS AND FINISHES.  
REPORT ANY DISCREPANCIES IN DRAWINGS TO  
ARCHITECT BEFORE PUTTING WORK IN HAND.  
CHECK ALL DIMENSIONS ON SITE.  
THIS DRAWING IS THE PROPERTY OF SEAN  
HARRINGTON ARCHITECTS AND MAY NOT BE  
REPRODUCED, IN WHOLE OR PART, WITHOUT  
PRIOR AGREEMENT.

REV.	NOTES	DATE	REV.	NOTES	DATE

**SEAN HARRINGTON ARCHITECTS**  
 11th Floor, 250 Broad Street  
 Edgworthstown Library  
 Longland County Council  
 Elevation : Back elevation & side elevation

PL/005
1200
July 15
AR
SH

RPT 8 No. 33.



# Rural Place Map

Surveyed 2001  
Revised 2014  
Levelled

**ITM CENTRE PT. COORDS.**  
625828, 71772

**DESCRIPTION**  
**SITE OUTLINED IN RED**  
**SITE AREA = 0.41 HECTARES**

**MAP SHEETS**  
1:2500  
2361-D 2361-C



**OSi**  
**Authorized Internet Map**

O.S. COPYRIGHT LICENCE  
NUMBER - AR0090519

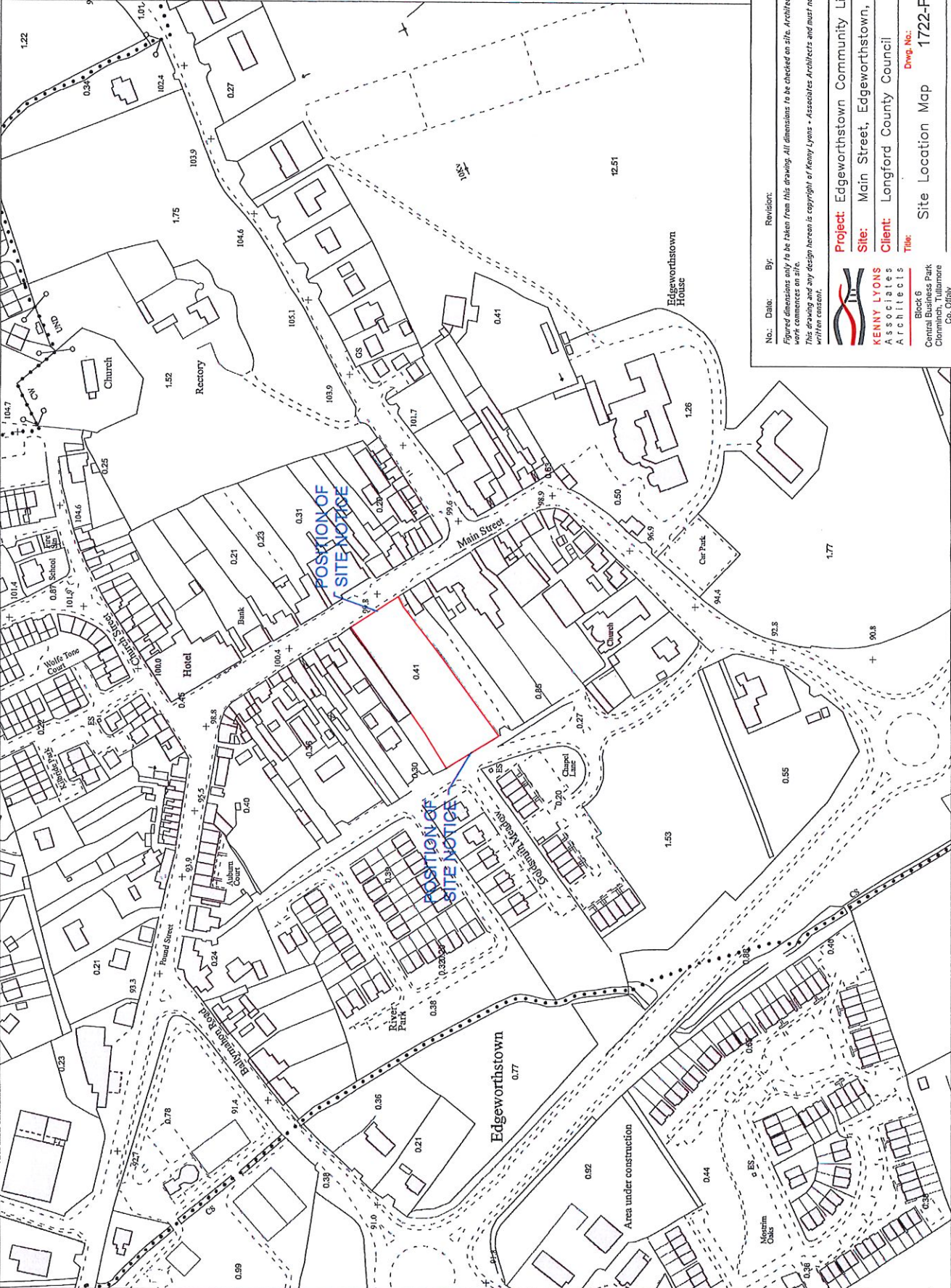
Arna thionsaigis arna foilsú ag Suidheacht Ordnála Éireann, Páirc an Fhionntice, Baile Átha Cliath 8, Éire. Compiled and published by Ordnance Survey Ireland, Phoenix Park, Dublin 8, Ireland.

Suiréam saindeighthe meántráthraibh cóipeáilte Shuidheacht Ordnála Éireann agus Foilsú na hÉireann. Lúthrasaíocht réamhshonraí ag Suidheacht Ordnála Éireann agus Foilsú na hÉireann, Páirc an Fhionntice, Baile Átha Cliath 8, Éireann.

Each cead ar cosnadh. Ní ceadmhaic san áireamh den mhóscúil seo a chloipeáil, a stairpeáil nó a thurchar in ar form ná ar son bhealach gan cead i scríobhadh ról nó ó úil an choipeáil.

All rights reserved. No part of this publication may be copied, reproduced or transmitted in any form or by any means without the prior written permission of the copyright owners.

Ní hionann bóthar, bealach nó cosán a bheith ar an léarscáil a áiríonn foilsú ar chéad úil. The representation on this map of



No. \_\_\_\_\_ Date: \_\_\_\_\_ By: \_\_\_\_\_  
Revised: \_\_\_\_\_  
Figured dimensions only to be taken from this drawing. All dimensions to be checked on site. Architects to be informed immediately of any discrepancies before work commences on site.  
This drawing and any design hereon is copyright of Kenny Lyons + Associates. Architects and must not be reproduced in whole or in part without their prior written consent.

**KENNY LYONS**  
**Associates**  
**Architects**

Block 6  
Central Business Park  
Clonsilla  
Co. Offaly

Tel: 057 6326241  
Fax: 057 6051935  
design@kennylyons.com

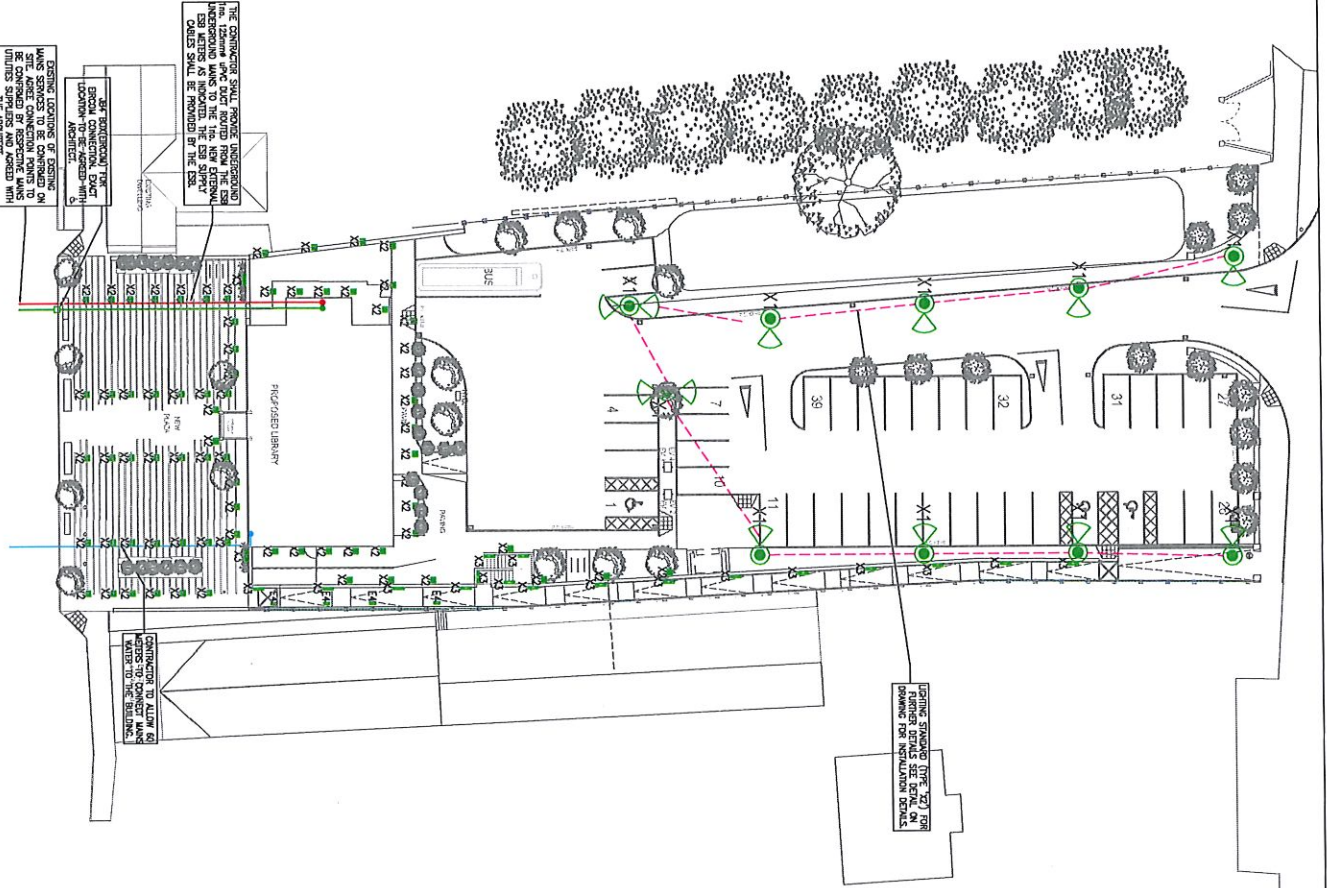


**Project:** Edgeworthstown Community Library  
**Site:** Main Street, Edgeworthstown, Co. Longford  
**Client:** Longford County Council  
**Title:** Site Location Map  
**Dwg. No.:** 1722-P001  
**Rev:**

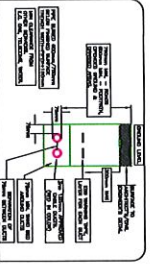
Date: 12.11.19 Scale: 1:2500 Drawn by: NMcD Checked: JB  
A3 © 2019



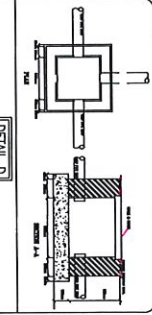
Scale:- 1:2,500  
Scale:- 1:2,500



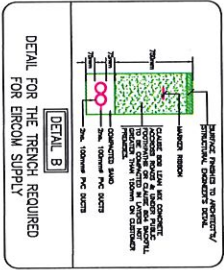
SITE SERVICES LAYOUT



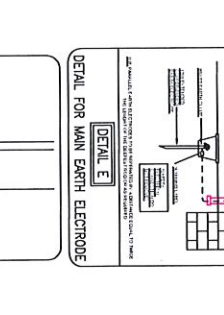
DETAIL A  
DETAIL FOR THE TRENCH REQUIRED FOR THE ESB DUCTING



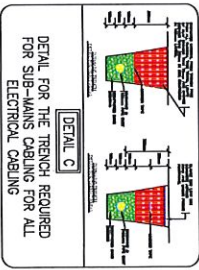
DETAIL D  
DETAIL FOR THE ACCESSIBLE MANHOLE CHAMBER FOR SERVICES



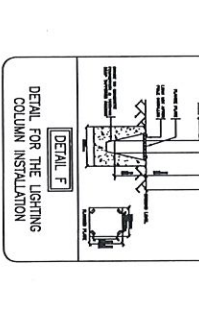
DETAIL B  
DETAIL FOR THE TRENCH REQUIRED FOR THE ESB SUPPLY



DETAIL E  
DETAIL FOR MAIN EARTH ELECTRODE

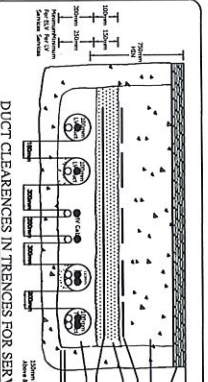


DETAIL C  
DETAIL FOR THE TRENCH REQUIRED FOR SUB-MAINS CABLEING FOR ALL ELECTRICAL CABLEING



DETAIL F  
DETAIL FOR THE LIGHTING COLUMN INSTALLATION

- SITE SERVICES SYMBOLS**
- LOCATION WHERE WATER SERVICES ENTER THE BUILDING
  - LOCATION WHERE POWER SERVICES ENTER THE BUILDING
  - LOCATION WHERE ESB SERVICES ENTER THE BUILDING
  - WATER SERVICES TO BUILDING
  - ELECTRICAL SERVICES TO THE BUILDING
  - ESB SERVICES TO BUILDING
  - EXTERNAL LAMP STANDARD
  - XZ EXTERNAL RECESSED GROUND SPOT LED
  - XZ GROUND LINEAR FLOODLIGHT FOR BUILDING ILLUMINATION
  - XZ STAIN-ALCINE LED BATTERY SUPPLIED



DUCT CLEARANCES IN TRENCHES FOR SERVICES

GENERAL NOTES:

1. THE DRAWING IS TO BE READ IN CONJUNCTION WITH ALL OTHER DRAWINGS & SPECIFICATIONS.
2. ALL THE CONTRACTOR SHALL OBTAIN ALL NECESSARY PERMITS AND APPROVALS FROM THE LOCAL AUTHORITIES PRIOR TO COMMENCING WORK. THE CONTRACTOR SHALL BE RESPONSIBLE FOR THE OBTAINING OF ALL SERVICES AND WORKS REQUIRED FOR THE PROJECT.
3. EXTRA COSTS INCURRED DUE TO THE CONTRACTOR'S NEGLIGENCE OR MISMANAGEMENT WILL NOT BE ACCEPTED BY THE ARCHITECT.
4. DO NOT SCALE THE DRAWING. ALL DIMENSIONS TO BE TAKEN ON SITE. ALL DIMENSIONS IN mm UNLESS STATED OTHERWISE.
5. EXACT LOCATIONS OF ALL SERVICES TO BE AGREED ON SITE. FINAL LOCATIONS OF ALL SERVICES TO BE CO-ORDINATED ON SITE WITH FINISHED FLOORING WORK.
6. THE CONTRACTOR SHALL ALLOW FOR ALL DIMENSIONS TO BE TAKEN ON SITE. ALL DIMENSIONS TO BE TAKEN ON THE DRAWINGS AND SPECIFICATIONS.
7. REFER TO ALL OTHER DRAWINGS FOR SPECIFIC LAYOUT OF REQUIRED SERVICES THROUGHOUT THE BUILDING.
8. THE CONTRACTOR SHALL VERIFY THE LOCATION OF ALL UNDERGROUND AND OVERHEAD UTILITIES SERVICES BEFORE EXCAVATION COMMENCES.
9. CAREFUL HAND DIGGING OF TRENCHES USING A SAFE DIGGING PRACTICE SHALL BE USED FOR ALL SERVICE LOCATIONS AND PRIOR TO LAYING A MECHANICAL DUCTS IN THE TRENCHES. CAREFUL DIGGING MUST BE ASSURED.
10. SEE SPECIFICATION FOR FURTHER INFORMATION ON THE MECHANICAL AND ELECTRICAL APPROVALS REQUIRED.
11. REFER TO ALL OTHER DRAWINGS FOR SPECIFIC LAYOUT OF REQUIRED SERVICES THROUGHOUT THE BUILDING.
12. THE CONTRACTOR SHALL VERIFY THE LOCATION OF ALL UNDERGROUND AND OVERHEAD UTILITIES SERVICES BEFORE EXCAVATION COMMENCES.
13. CAREFUL HAND DIGGING OF TRENCHES USING A SAFE DIGGING PRACTICE SHALL BE USED FOR ALL SERVICE LOCATIONS AND PRIOR TO LAYING A MECHANICAL DUCTS IN THE TRENCHES. CAREFUL DIGGING MUST BE ASSURED.
14. SEE SPECIFICATION FOR FURTHER INFORMATION ON THE MECHANICAL AND ELECTRICAL APPROVALS REQUIRED.
15. REFER TO ALL OTHER DRAWINGS FOR SPECIFIC LAYOUT OF REQUIRED SERVICES THROUGHOUT THE BUILDING.

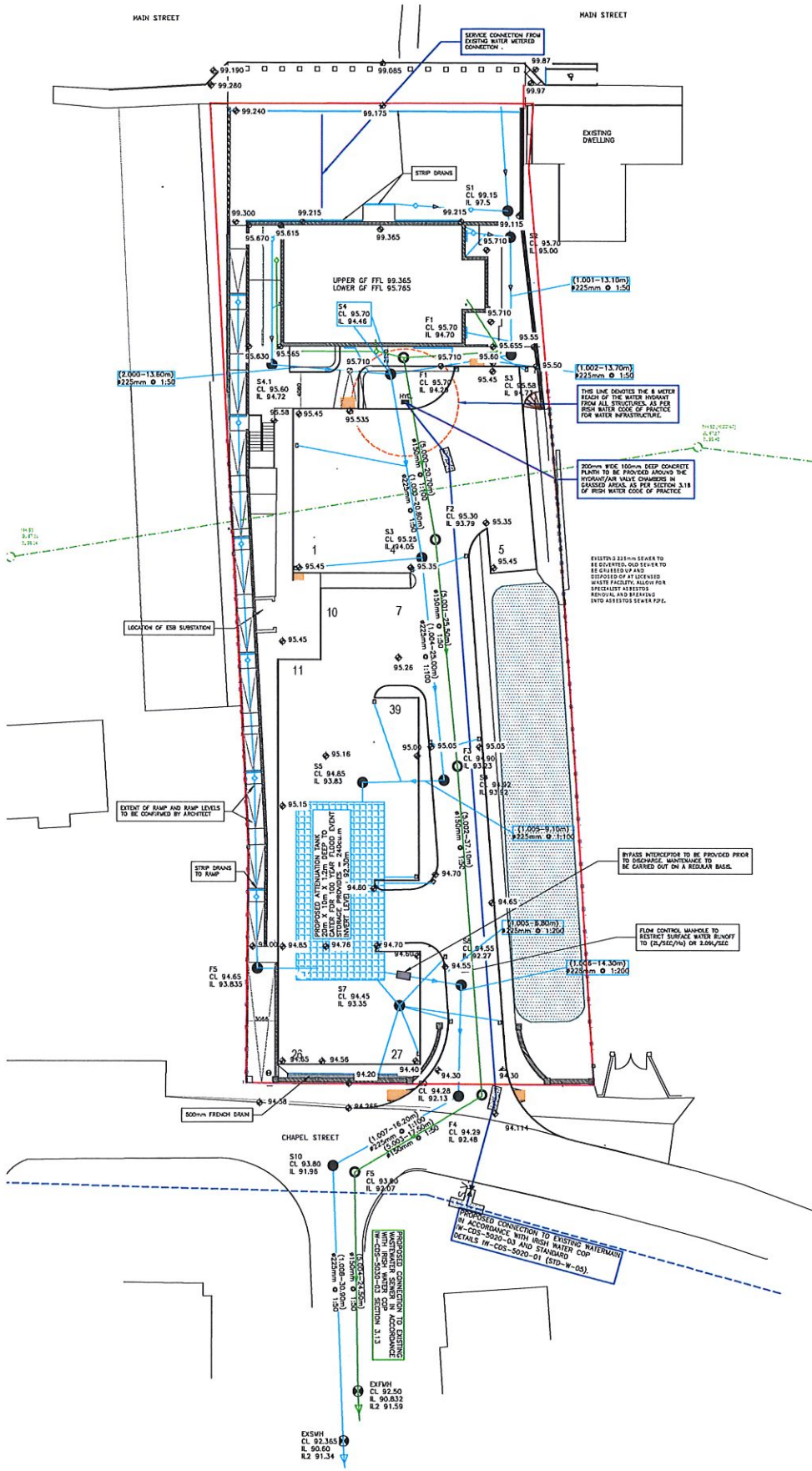
**GALILEO ENERGY SERVICES**  
 UNIT 1A, MA BUSINESS PARK  
 MANNOOTH ROAD, CEDBRIDGE, CO. DUBLANE  
 TEL: 01-4274109  
 WWW.GALILEOENERGY.IE

**PRELIMINARY**

EDGEWORTHSTOWN LIBRARY,  
 CHURCH STREET,  
 EDGEWORTHSTOWN,  
 CO. LONGFORD.

**SITE SERVICES LAYOUT**

Drawing No: 1250 0 01  
 Drawing Date: 17-07-05  
 Drawn By: ROBERT WHITE  
 Checked By: ME(S001)  
 P1



LEGEND	
[Symbol]	GULLY
[Symbol]	PROPOSED TWIN WALL SURFACE WATER PIPES
[Symbol]	EXISTING SURFACE WATER PIPES
[Symbol]	PROPOSED PVC FOUL SEWER PIPES
[Symbol]	EXISTING FOUL SEWER PIPES
[Symbol]	PROPOSED 1125mm PE WATERMAIN
[Symbol]	EXISTING WATERMAIN
[Symbol]	BOUNDARY LINE
[Symbol]	PROPOSED SURFACE WATER MANHOLE
[Symbol]	PROPOSED FOUL SEWER MANHOLE
[Symbol]	EXISTING MANHOLE
[Symbol]	PROPOSED INSPECTION CHAMBER
[Symbol]	COVER LEVEL
[Symbol]	INVERT LEVEL
[Symbol]	ANCHOR/THRUST BLOCK
[Symbol]	SLUICE VALVE
[Symbol]	SCOUR VALVE
[Symbol]	HYDRANT
[Symbol]	AIR VALVE
[Symbol]	WATER METER
[Symbol]	DROP MANHOLE
[Symbol]	ELECTRIC POLE
[Symbol]	TELEPHONE POLE
[Symbol]	LAMP POST

- NOTES:-
- THIS DRAWING SHOULD BE READ IN CONJUNCTION WITH ALL RELEVANT ENGINEER'S AND ARCHITECT'S DRAWINGS AND SPECIFICATIONS.
  - ALL LEVELS ARE IN METRES TO ORDNANCE DATUM, MAIN HEAD UNLESS NOTED OTHERWISE.
  - THE POSITION OF EXISTING SERVICES AS SHOWN ON THE DRAWING MAY NOT BE ACCURATE. THE CONTRACTOR SHALL BE FULLY RESPONSIBLE FOR LOCATING ALL EXISTING SERVICES ON THE SITE AND SHOULD CONTACT THE RESPECTIVE UTILITY PROVIDERS AND AUTHORITIES FOR THE MOST UP-TO-DATE INFORMATION BEFORE COMMENCING THE WORKS.
  - EXISTING LEVELS ARE INDICATIVE ONLY AND MUST BE CHECKED AND VERIFIED ON SITE PRIOR TO COMMENCEMENT.
  - PROPOSED MANHOLE COVER LEVELS ARE APPROXIMATE AND SHOULD BE ADJUSTED TO SUIT LOCAL FINISHES.
  - ALL SURFACE WATER DRAINAGE INFRASTRUCTURE SHALL BE CONSTRUCTED IN ACCORDANCE WITH LOCAL AUTHORITY REQUIREMENTS.
  - LOCKABLE TYPE GULLY TRAPS TO BE USED ON ALL SURFACE WATER DRAINS.
  - GULLY POSITIONS ARE APPROXIMATE ONLY AND SHOULD BE LOCATED AT LOW POINTS.
  - REFER TO ARCHITECT'S DRAWINGS FOR ALL ROOF DRAINAGE, STRIP DRAINS AND GULLY TRAPS BENEATH DOWNPIPES.
  - WHERE IT IS NOT POSSIBLE TO ACHIEVE MINIMUM COVER, PIPES SHOULD BE BEDDED AND SURROUNDED IN CONCRETE 150MM THICK CLASS E IN ACCORDANCE WITH TR STANDARD CONSTRUCTION DETAIL CC-S00-00S21.
  - ALL WASTEWATER DRAINAGE INFRASTRUCTURE SHALL BE CONSTRUCTED IN ACCORDANCE WITH IRISH WATER STANDARDS. REFER TO IRISH WATER PUBLICATIONS "WASTEWATER INFRASTRUCTURE STANDARD DETAILS - IN-C05-S00-01" AND "CODE OF PRACTICE FOR WASTEWATER INFRASTRUCTURE - IN-C05-S03-03".
  - HYDRANTS TO BE ACCORDANCE WITH IRISH WATER STANDARD DETAILS STD-W-16 TO STD-W-19.
  - THRUST BLOCK ARRANGEMENTS SHALL COMPLY WITH IRISH WATER STANDARD DETAILS STD-W-28.
  - REFER TO MECHANICAL AND ELECTRICAL ENGINEER'S DRAWINGS FOR INTERNAL DRAINAGE AND DETAILS OF SOIL AND VENT PIPES LEADING TO WASTEWATER DRAINAGE A/S.
  - ALL WATER INFRASTRUCTURE SHALL BE CONSTRUCTED IN ACCORDANCE WITH IRISH WATER STANDARDS. REFER TO IRISH WATER PUBLICATIONS "WATER INFRASTRUCTURE STANDARD DETAILS - IN-C05-S00-01" AND "CODE OF PRACTICE FOR WATER INFRASTRUCTURE - IN-C05-S02-03".
  - ALL PLANTING & TREES TO COMPLY WITH SEPARATION DISTANCES AS PER IRISH WATER STANDARD DETAILS FOR WASTEWATER, STD-W-06 AND STD-W-06A AND FOR WATER, STD-W-12 AND STD-W-12A.

**INFORMATION**

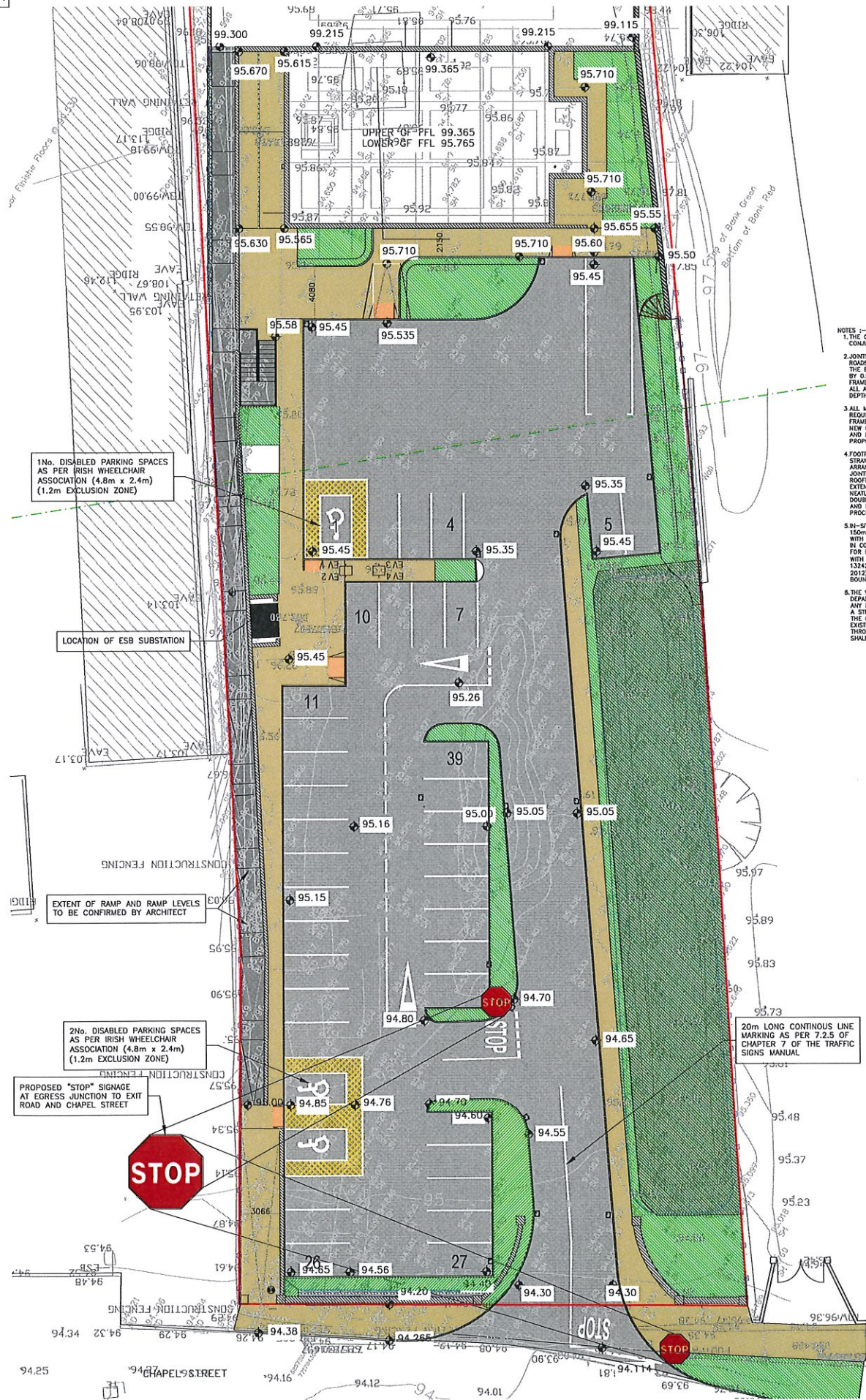
© ORS  
 This drawing and any design herein is the copyright of the Consultants and must not be reproduced without their written consent. All drawings remain the property of the Consultants.  
 Figures dimension only to be taken from this drawing. All dimensions to be checked on site.  
 Consultants to be informed immediately of any design changes before work proceeds.

REV NO	DATE	REVISION NOTE	DRW	CHK
P01	23/09/2019	ISSUED FOR DISCUSSION	SG	MH
P02	23/09/2019	ISSUED FOR EX CONNECTION APPLICATION	SG	MH
P03	30/09/2019	ISSUED FOR INFORMATION	SG	MH
P04	23/10/2019	ISSUED FOR INFORMATION	SG	MH
P05	18/11/2019	ISSUED FOR INFORMATION	SG	MH

CLIENT:	LONGFORD COUNTY COUNCIL
PROJECT:	LIBRARY @ EDGEWORTHSTOWN, CO. LONGFORD
TITLE:	CIVIL SERVICES LAYOUT
DATE:	02/09/2019
CHECKED:	MH
APPROVED:	MH
JOB NO:	191_019
SCALE:	1:250
DRAWN BY:	SG
DRIVER/CHKD:	MH
REV:	P05
191_019-ORS-Z0-00-DR-C-400	

**ORS**

Ordn (London) Ltd  
 1-333 4493 423161 | www.ors.ie | info@ors.ie  
 ISO 9001:2008 QUALITY ASSURED COMPANY



	PROPOSED FOOTPATH
	PROPOSED ROAD AND CARPARK
	EXISTING JAPANESE KNOTWEED BERM
	PROPOSED GREEN AREA
	PROPOSED CONCRETE KERBS
	PROPOSED CONCRETE RAMP
	PROPOSED LEVELS
	EXISTING LEVELS

- NOTES :-
1. THE CONTRACTOR SHOULD READ THIS ROAD SPECIFICATION IN CONJUNCTION WITH THE RELEVANT TYPICAL DETAILS.
  2. JOINTS BETWEEN NEW ROAD CONSTRUCTION AND EXISTING ROADS SHALL BE AS PER THE DETAILS IN TI-CO-SC-00703. THE EDGES OF THE EXISTING CARREGWAY TO BE CUT BACK BY 0.5m WITH A ROTARY SAW TO FORM A VERTICAL FACE AND FRAMED IN ACCORDANCE WITH TI-CO-SC-00703 INCLUDE FOR ALL ADDITIONAL EXCAVATION AND FELLING TO ACHIEVE REQUIRED DEPTH OF SUB BASE WHERE NEW AND EXISTING WORKS MEET.
  3. ALL MANHOLES RAISED TO MEET THE NEW ROAD LEVEL WHERE REQUIRED. DESIGN CONCRETE TO MANHOLE COVERS AND FRAMES AND INCLUDE FOR SETTING FRAME IN CONCRETE TO NEW OR ADJUSTED LEVELS WHERE REQUIRED. PROTECT COVER AND FRAME DURING COURSE OF WORKS. ALL GULLIES TO MEET PROPOSED NEW SURFACE LEVEL WHERE REQUIRED ALSO.
  4. FOOTPATH EXPANSION JOINTS SHALL BE NEATLY FORMED IN STRAIGHT LINES AT NOT GREATER THAN 5m CENTERS AND SO ARRANGED AS TO COINCIDE WITH THE JOINTS IN THE KERB. JOINTS SHALL BE FORMED BY INSERTING A DOUBLE LAYER OF ROOFING FELT OR OTHER APPROVED METHOD, WHICH SHALL EXTEND THE FULL DEPTH OF THE SLAB AND BE FINISHED OFF NEATLY AT THE SURFACE. THE CONTRACTOR SHALL ENSURE THE DOUBLE LAYER OF ROOFING FELT IS SUPPORTED IN THE JOINT AND HELD IN A STRAIGHT LINE DURING THE CONSTRUCTION PROCESS.
  5. IN-SITU CONCRETE SHALL BE POURED ON A SUB-BASE OF 150mm NOMINAL THICK OF GRANULAR MATERIAL COMPLYING WITH CLAUSE 806. CONCRETE SHALL BE LAD AND COMPACTED IN COMPLIANCE WITH THE 800 SERIES OF THE SPECIFICATION FOR ROAD WORKS. ALL MATERIALS SPECIFIED SHALL COMPLY WITH REQUIREMENTS OF SR 21 (ANNEX E AMENDED TO LS EN 12422:2013 AND BASED ON THE REPORT OF PYPTE PANEL 2012) AGGREGATED FOR USE IN UNBOUND & HYDRAULICALLY BOUND GRANULAR MATERIALS.
  6. THE VERTICAL ALIGNMENT OF THE FINISHED SURFACE SHALL NOT DEPART FROM THE DESIGN LEVEL BY MORE THAN +/-10m AT ANY POINT - THE MAXIMUM DEVIATION OF THE SURFACE UNDER A STRAIGHT EDGE SHALL NOT BE GREATER THAN 5mm IN 3m. THE CONTRACTOR SHALL ALLOW FOR THE PROTECTION OF ALL EXISTING SERVICE CHAMBERS, MANHOLES AND DUCTING THROUGHOUT THE WORKS. ALL CONCRETE JOINTS AND EDGES SHALL BE BULL NOSED.

1 No. DISABLED PARKING SPACES AS PER IRISH WHEELCHAIR ASSOCIATION (4.8m x 2.4m) (1.2m EXCLUSION ZONE)

LOCATION OF ESB SUBSTATION

EXTENT OF RAMP AND RAMP LEVELS TO BE CONFIRMED BY ARCHITECT

2 No. DISABLED PARKING SPACES AS PER IRISH WHEELCHAIR ASSOCIATION (4.8m x 2.4m) (1.2m EXCLUSION ZONE)

PROPOSED "STOP" SIGNAGE AT EGRESS JUNCTION TO EXIT ROAD AND CHAPEL STREET

20m LONG CONTINUOUS LINE MARKING AS PER 7.2.5 OF CHAPTER 7 OF THE TRAFFIC SIGNS MANUAL

**INFORMATION**

© ORS  
This drawing and any design hereon is the copyright of the Consultants and must not be reproduced without their written consent. All drawings remain the property of the Consultants.

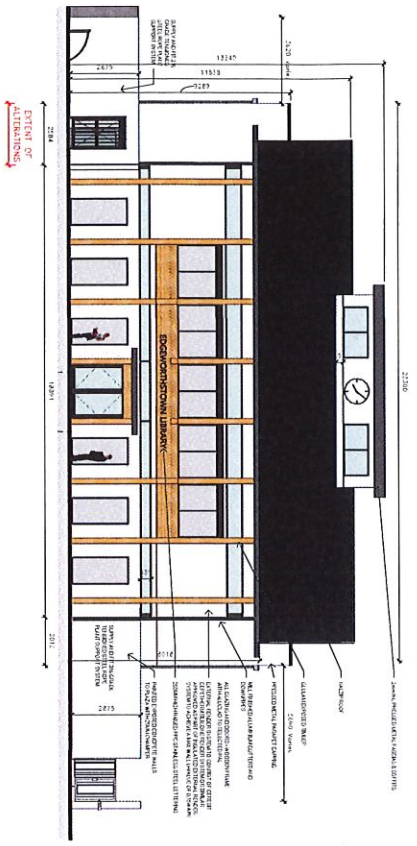
Figured dimension only to be taken from this drawing. All dimensions to be checked on site.  
Consultants to be informed immediately of any discrepancies before work proceeds.

REVNO	DATE	REVISION NOTE	CHKD	CHK2
P01	30/09/2019	ISSUED FOR INFORMATION	SG	MH
P02	22/10/2019	ISSUED FOR INFORMATION	SG	MH
P03	18/11/2019	ISSUED FOR INFORMATION	SG	MH

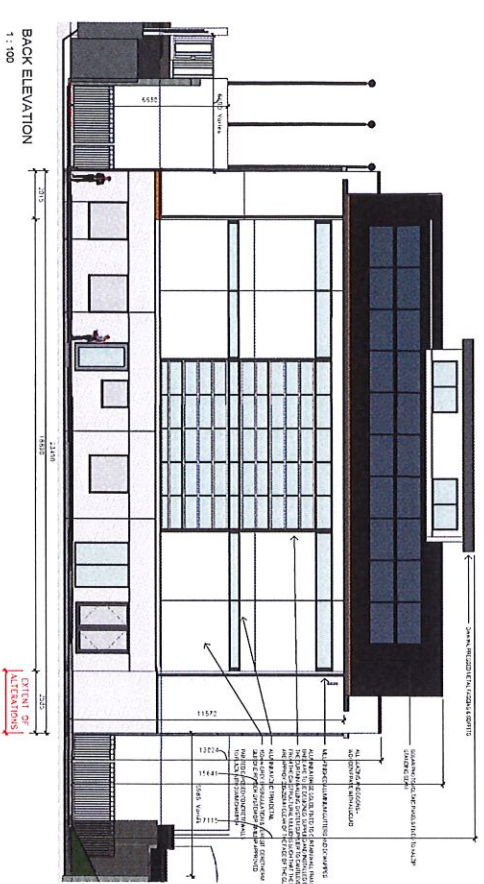
CLIENT:		LONGFORD COUNTY COUNCIL	
PROJECT:		LIBRARY @ EDGEWORTHSTOWN, CO. LONGFORD	
TITLE:		CAR PARK LAYOUT	
DRAWN	CHECKED	APPROVED	JOB NO.
SG	MH	MH	191_019
DATE	SCALE	DESIGNED BY	REV:
30/09/2019	1:150	191_019-ORS-20-00-DR-TR-700	P03

**ORS**

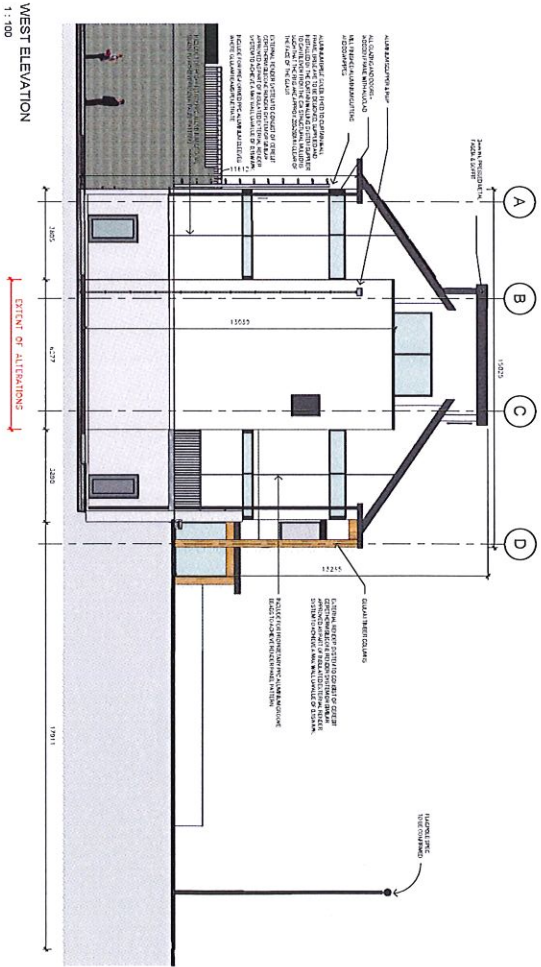
Dublin | London | Dún Dealgan  
 T: +353 4393 42518 | F: +353 4393 42519 | www.ors.ie | info@ors.ie  
 ISO 9001:2009 QUALITY ASSURED COMPANY



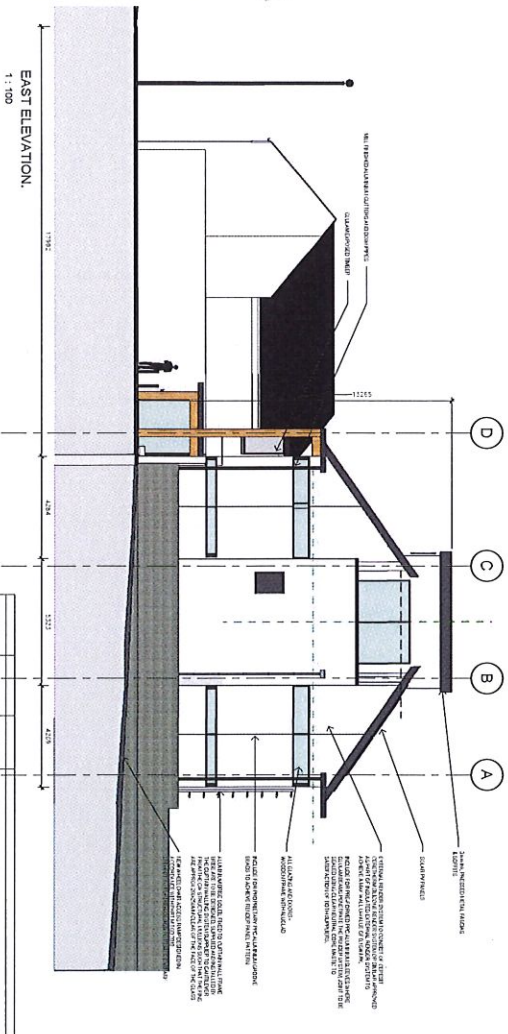
FRONT ELEVATION  
1 : 100



BACK ELEVATION  
1 : 100



WEST ELEVATION  
1 : 100



EAST ELEVATION  
1 : 100

Section Number	Description	Scale	Notes
A	SECTION A	AS SHOWN	SECTION A

Use of general dimensions only. All dimensions to be checked on site. This drawing and any design therein is copyright of Kenney, Lewis & Associates Architects and shall not be reproduced in whole or in part without their prior consent.

**KENNEY, LEWIS & ASSOCIATES ARCHITECTS**  
 Project: Eggenstrom Community Library  
 Site: Main Street, Eggenstrom, CA, Langford  
 Client: Langford County Council

Drawn by: **1722** P200 A  
 Checked by: **1722** P200 A  
 Date: 10-11-2010 Scale: 1:100 Drawn by: MDCD Checked by: JB  
**PART 8 PLANNING APPLICATION**  
 01/2018

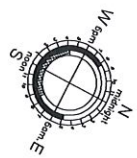
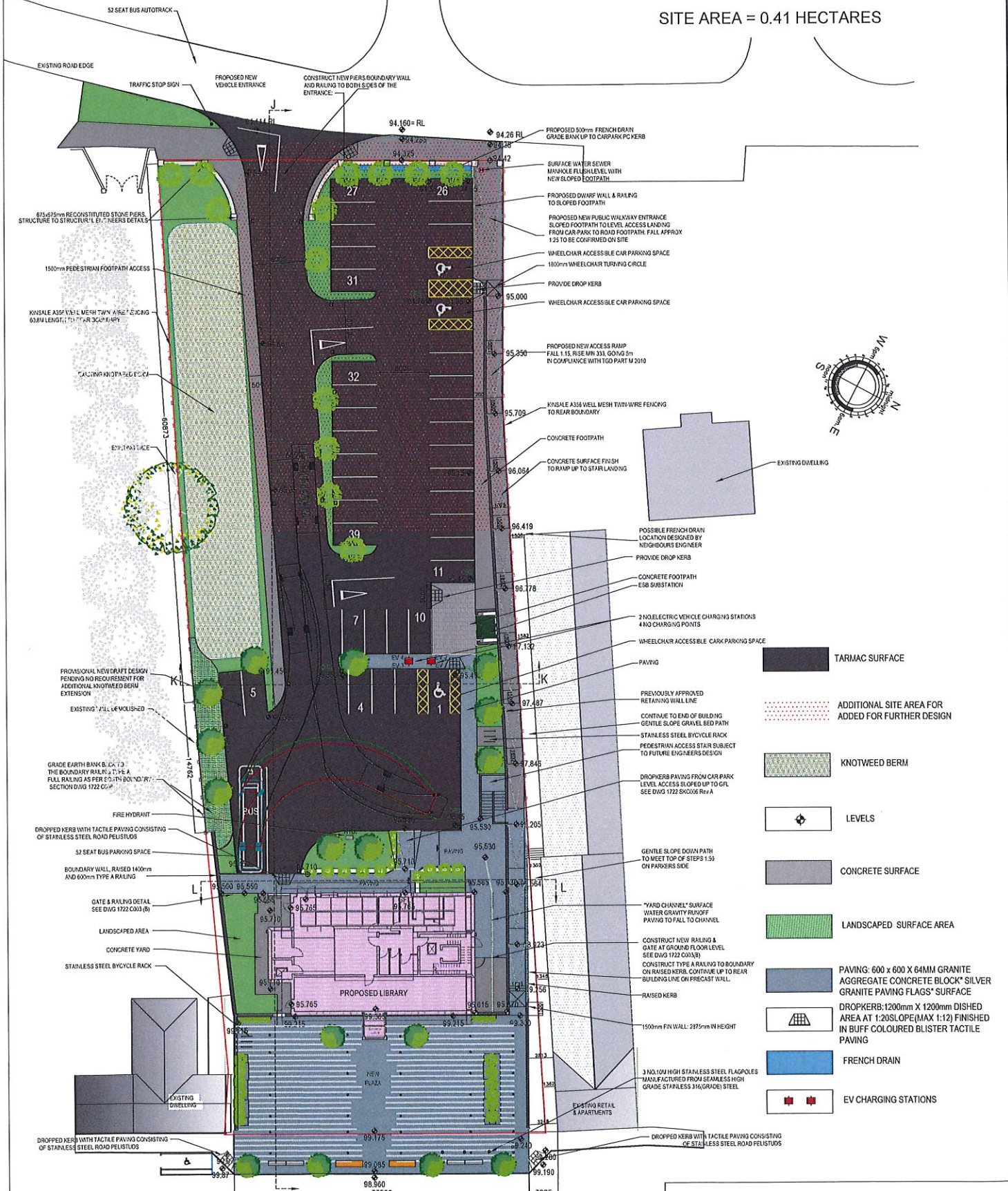


# SITE LAYOUT PLAN

SCALE 1:200 @ A1

— INDICATES SITE BOUNDARY

SITE AREA = 0.41 HECTARES



- TARMAC SURFACE
- ADDITIONAL SITE AREA FOR ADDED FOR FURTHER DESIGN
- KNOTWEED BERM
- LEVELS
- CONCRETE SURFACE
- LANDSCAPED SURFACE AREA
- PAVING: 600 x 600 x 64MM GRANITE AGGREGATE CONCRETE BLOCK
- DROPKERB: 1200mm X 1200mm DISHED AREA AT 1:20SLOPE (MAX 1:12) FINISHED IN BUFF COLOURED BLISTER TACTILE PAVING
- FRENCH DRAIN
- EV CHARGING STATIONS

*Use figured dimensions only. All dimensions to be checked on site. Architects to be informed immediately of any discrepancies before work commences on site. This drawing and any design herein is copyright of Kenny Lyons & Associates Architects and must not be reproduced in whole or in part without their prior consent.*

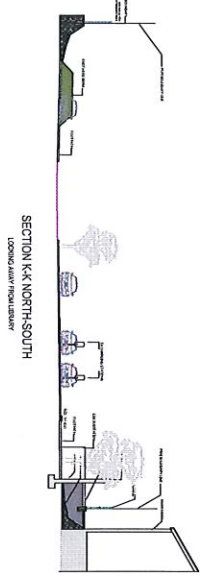
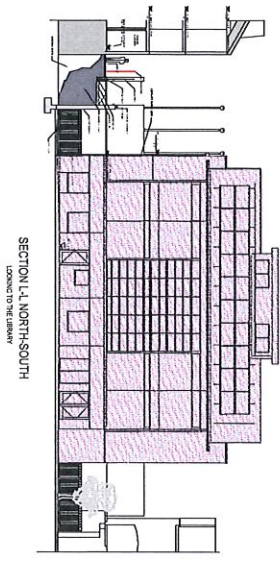
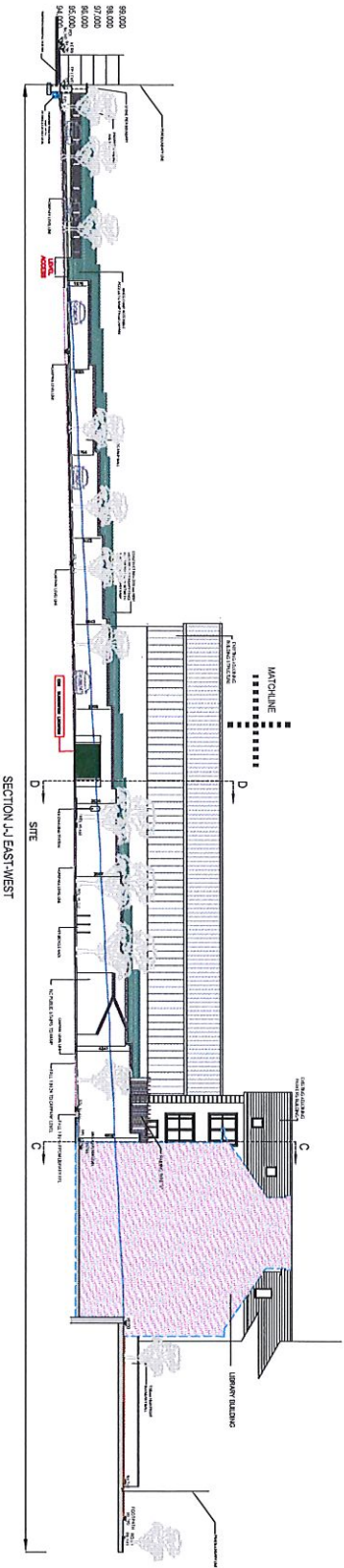
Project: Edgeworthstown Community Library  
 Site: Main Street, Edgeworthstown, Co. Longford  
 Client: Longford County Council






KENNY LYONS  
 Architects  
 14 007 201241  
 14 007 201241  
 14 007 201241

Title: SITE LAYOUT PLAN  
 Draw No: 1722 - P002  
 Date: 12-11-2019 Scale: 1:200 Drawn By: NHC/D Checked By: JB

Part 8 PLANNING APPLICATION






-  LIBRARY BUILDINGS
-  WELD MESH BOUNDARY FENCING
-  ROAD LEVEL
-  E88 SUB STATION
-  KLA NEW RAMP E88L DESIGN 09A47 RAMP NEW FALL 1.703

Revision Number	Revision Date	Issued By	Revision Description

Use ground dimensions only. All dimensions to be checked on site. Architects to be informed immediately of any discrepancies before work commences on site. Reproduction in whole or in part without their prior consent is prohibited.


**Kenny Lyons Associates**  
 Project: Edgeworkstow Community Library  
 Site: Main Street, Edgeworkstow, Co. Longford  
 Client: Longford County Council  
 Draw No: 1722 - P011  
 Date: 12-11-2019 Scale: 1:200  
 Drawn By: NMD Checked: JB  
**PART 8 PLANNING APPLICATION**

